

# MicroSquare LED

**Linear Systems** Suspended and Wall Mounted

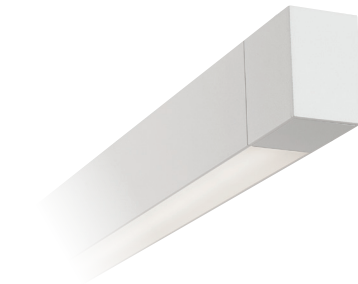


# Slender. Adaptable. Performance.

Philips Ledalite introduces high performance optical packages in MicroSquare LED.

The thin profile aluminum luminaires can be mounted individually or combined in rows in either of two lens styles.

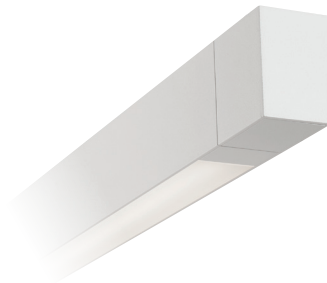
Sleek and minimal, the luminaires are also available in T5/T5HO versions.



Uninterrupted style lens at end  
(without bottom plate in 44" increments)



Uninterrupted style lens at joint  
(without bottom plate in 44" increments)

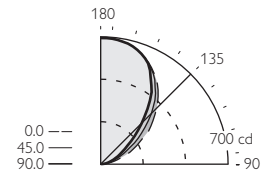


Standard style lens at end  
(with bottom plate in 48" increments)



Standard style lens at joint  
(with bottom plate in 48" increments)

## LED Indirect

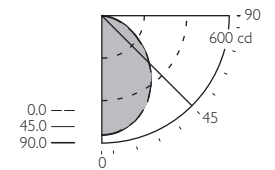


### MQ03L indirect LED lens curve

Standard lumen option

Efficacy	79.6 lm/W
Total lumens	1584 lm
Light source	LED
Input watts	19.9

## LED Direct

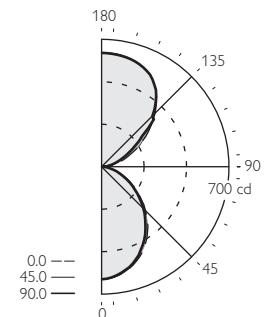


### MQ01L direct LED lens curve

Standard lumen option

Efficacy	67.0 lm/W
Total lumens	1333 lm
Light source	LED
Input watts	19.9

## LED Bidirectional



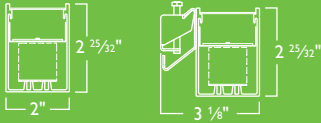
### MQ06L bidirect LED lens curve

Standard lumen option

Efficacy	82.2 lm/W
Total lumens	3056 lm
Light source	LED
Input watts	37.2
Distribution	53.5% Up/ 46.5% Down

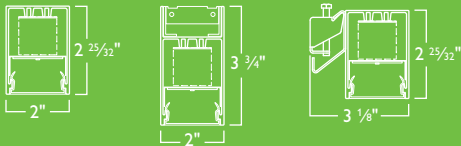
# MicroSquare LED photometry and ordering

## LED Indirect



Family	Mounting	Distribution	Lamp Type	LED Color	Lumen Category	Lower Optics	Upper Optics	Row Length	Wiring	Voltage	Ballast	Finish
<b>MQ</b>		<b>3</b>	<b>L</b>			<b>N</b>	<b>F</b>				<b>E</b>	
MicroSquare	0 = Pendant 2 = Wall	3 = Indirect	L = LED	A = 4000K B = 3500K C = 3000K	G = Hi lumen (2900 lm/ 4' nominal) K = Standard lumen (1500 lm/ 4' nominal)	N = None	F = Dust cover	Enter the total row length in feet (4' increments)	1 = 1 circuit B = 2 circuit (Tandem switch) 7 = 1 circuit dimming (0-10V) X = Custom wiring (Consult factory)	1 = 120V 2 = 277V D = 120-277V Universal	E = Electronic	W = White A = Aluminum C = Custom color (Consult factory)

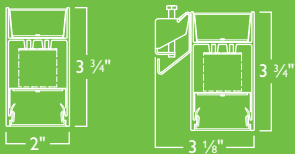
## LED Direct



Family	Mounting	Distribution	Lamp Type	LED color	Lumen category	Lower optics	Upper optics	Row length	Wiring	Voltage	Ballast	Finish
<b>MQ</b>		<b>1</b>	<b>L</b>				<b>N</b>				<b>E</b>	
MicroSquare	0 = Pendant 1 = Surface <sup>1</sup> 2 = Wall	1 = Direct	L = LED	A = 4000K B = 3500K C = 3000K	G = Hi lumen (2300 lm/ 4' nominal) K = Standard lumen (1300 lm/ 4' nominal)	C = Uninterrupted style frosted lens F = Standard style frosted lens	N = None	Use 44" increments for uninterrupted style lens options.  Use 4' increments for standard style lens options.	1 = 1 circuit B = 2 circuit (Tandem switch) 7 = 1 circuit dimming (0-10V) X = Custom wiring (Consult factory)	1 = 120V 2 = 277V D = 120-277V Universal	E = Electronic	W = White A = Aluminum C = Custom color (Consult factory)

<sup>1</sup> Direct surface option is available for continuous row mounting with the standard lens style but not with the uninterrupted lens style.

## LED Bidirectional



Family	Mounting	Distribution	Lamp type	LED color	Lumen category	Lower optics	Upper optics	Row length	Wiring	Voltage	Ballast	Finish
<b>MQ</b>		<b>6</b>	<b>L</b>				<b>F</b>				<b>E</b>	
MicroSquare	0 = Pendant 2 = Wall	6 = Bidirectional	L = LED	A = 4000K B = 3500K C = 3000K	G = Hi lumen, 5400 lumens (Combined up and down per 4' nominal) K = Standard lumen, 3000 lumens (Combined up and down per 4' nominal)	C = Uninterrupted style frosted lens F = Standard style frosted lens	F = Dust cover	Use 44" increments for uninterrupted style lens options.  Use 4' increments for standard style lens options.	1 = 1 circuit 2 = 2 circuit (Up/Down switch) B = 2 circuit (Tandem switch) 7 = 1 circuit dimming (0-10V) X = Custom wiring (Consult factory)	1 = 120V 2 = 277V D = 120-277V Universal	E = Electronic	W = White A = Aluminum C = Custom color (Consult factory)



© 2013 Koninklijke Philips Electronics N.V. All rights reserved.  
Specifications are subject to change without notice.  
[www.philips.com/luminaires](http://www.philips.com/luminaires)

PLe-2105BR 04/13

Philips Lighting Company  
200 Franklin Square Drive  
Somerset, NJ 08873  
Phone: 855-486-2216

Philips Lighting Company  
281 Hillmount Road  
Markham ON, Canada L6C 2S3  
Phone: 800-668-9008